

Students Feedback Report

Applied Chemistry							
	Q1. Learning value (in terms skills, concepts, knowledge and analytical abilities)	Q2. Applicability/relevance to real life situation	Q3. Depth of the course content	Q4. Extent of coverage of course	Q5. Extent of effort required by students	Q6. Relevance/learning value of project/report	Q7. Overall rating
	4	5	4	5	5	5	5
Grade							
	Q1	Q2	Q3	Q4	Q5	Q6	Q7
1	0	0	0	0	0	0	0
2	0	0	0	0	0	0	0
3	0	0	0	0	0	0	0
4	1	0	1	0	0	0	0
5	0	1	0	1	1	1	1

Bengali							
	Q1. Learning value (in terms skills, concepts, knowledge and analytical abilities)	Q2. Applicability/relevance to real life situation	Q3. Depth of the course content	Q4. Extent of coverage of course	Q5. Extent of effort required by students	Q6. Relevance/learning value of project/report	Q7. Overall rating
	5	5	5	4	5	5	5
Grade							
	Q1	Q2	Q3	Q4	Q5	Q6	Q7
1	0	0	0	0	0	0	0
2	0	0	0	0	0	0	0
3	0	0	0	0	0	0	0
4	0	0	0	1	0	0	0
5	1	1	1	0	1	1	1

Chemistry							
	Q1. Learning value (in terms skills, concepts, knowledge and analytical abilities)	Q2. Applicability/relevance to real life situation	Q3. Depth of the course content	Q4. Extent of coverage of course	Q5. Extent of effort required by students	Q6. Relevance/learning value of project/report	Q7. Overall rating
	3	1	4	3	4	2	2
	3	1	3	5	3	4	3
	4	3	4	4	4	3	4
	5	5	5	4	4	4	5
	5	3	3	5	3	5	4
	4	3	4	5	4	4	4
	4	4	4	4	3	4	4

	4	4	5	4	5	5	5
	5	5	5	5	5	5	5
	3	1	4	2	3	2	3
	1	1	2	2	2	2	2
	4	4	4	4	5	4	4
	5	5	5	5	5	5	5
	4	4	4	5	5	5	4
	5	5	5	5	5	4	5
	4	4	5	5	5	5	4
	2	1	3	3	5	1	3
	2	1	3	3	5	1	2
	1	1	3	2	5	1	2
	3	1	3	4	4	2	1
	5	5	5	5	5	5	5
	5	5	5	5	5	5	5
	Grade						
	Q1	Q2	Q3	Q4	Q5	Q6	Q7
1	2	8	0	0	0	3	1
2	2	0	1	3	1	4	4
3	4	3	6	3	4	1	3
4	7	5	7	6	5	6	7
5	7	6	8	10	12	8	7

Computer Science							
	Q1. Learning value (in terms skills, concepts, knowledge and analytical abilities)	Q2. Applicability/relevance to real life situation	Q3. Depth of the course content	Q4. Extent of coverage of course	Q5. Extent of effort required by students	Q6. Relevance/learning value of project/report	Q7. Overall rating
	3	3	2	3	4	3	3
	5	4	5	5	5	5	5
	5	5	5	5	5	5	5
	4	4	5	5	4	4	4
	3	4	4	3	5	5	3
	4	4	3	4	3	3	3
	3	2	3	2	4	3	3
	5	5	5	4	4	5	5
	5	5	5	5	5	5	5
	3	3	4	4	4	3	3
	3	3	3	3	4	3	4
	3	3	3	3	3	3	3
	5	5	5	5	5	5	5
	4	4	4	4	4	4	4
	5	5	5	5	5	5	5
	4	4	5	5	5	4	5
	1	1	1	2	3	1	1
	4	5	4	4	4	4	4
	5	5	5	5	5	5	5
	5	4	4	5	4	4	5

	5	5	5	5	5	5	5
	5	5	5	5	5	5	5
	4	4	4	4	4	4	4
	5	5	5	5	5	5	5
	4	4	4	4	4	4	4
	5	5	5	5	3	5	5
	Grade						
	Q1	Q2	Q3	Q4	Q5	Q6	Q7
1	1	1	1	0	0	1	1
2	0	1	1	2	0	0	0
3	6	4	4	4	4	6	6
4	7	9	7	7	11	7	6
5	12	11	13	13	11	12	13

English							
	Q1. Learning value (in terms skills, concepts, knowledge and analytical abilities)	Q2. Applicability/relevance to real life situation	Q3. Depth of the course content	Q4. Extent of coverage of course	Q5. Extent of effort required by students	Q6. Relevance/learning value of project/report	Q7. Overall rating
	4	4	4	4	4	4	4
	5	5	5	5	5	5	5
	4	3	4	4	4	4	4
	5	5	5	5	5	5	5
	4	2	5	5	4	4	4
	5	5	5	5	5	5	5
	5	4	4	4	4	4	4
	5	4	5	5	5	5	5
	5	5	5	5	5	5	5
	4	2	3	3	4	3	4
	5	4	5	5	5	5	5
	5	4	5	5	5	4	5
	5	5	5	5	5	5	5
	5	5	5	5	5	5	5
	5	5	5	5	3	5	5
	4	5	5	5	5	5	5
	4	3	3	4	4	4	4
	4	4	4	4	4	4	4
	3	1	2	4	3	3	3
	4	4	4	4	4	4	4
	3	3	5	4	3	4	4
	5	3	4	4	4	5	5
	3	3	3	3	3	3	3
	5	4	5	5	5	4	5
	5	3	5	5	5	4	5
	5	5	5	5	5	5	5
	5	5	5	4	4	4	5
	Grade						

	Q1	Q2	Q3	Q4	Q5	Q6	Q7
1	0	1	0	0	0	0	0
2	0	2	1	0	0	0	0
3	3	6	3	2	4	3	2
4	8	8	6	10	10	12	9
5	16	10	17	15	13	12	16

History							
	Q1. Learning value (in terms skills, concepts, knowledge and analytical abilities)	Q2. Applicability/relevance to real life situation	Q3. Depth of the course content	Q4. Extent of coverage of course	Q5. Extent of effort required by students	Q6. Relevance/learning value of project/report	Q7. Overall rating
	5	5	5	4	5	5	5
	5	5	5	5	5	5	5
	5	5	5	5	5	5	5
	5	4	5	5	5	5	5
	5	4	5	5	5	5	5
	5	5	5	5	5	5	5
	5	5	5	5	5	5	5
	4	5	5	5	4	5	5
	5	5	5	5	5	5	5
	4	5	5	5	4	5	4
	5	5	5	5	5	5	5
	5	5	5	5	5	5	5
	5	5	5	5	5	5	5
	5	5	5	5	5	5	5
	5	4	4	4	4	3	4
	5	5	5	5	5	5	5
	5	4	5	5	5	4	5
	5	5	5	5	5	5	5
	1	1	1	1	1	1	1
	5	4	5	5	4	5	5
	5	5	3	3	3	5	5
	4	5	4	5	4	5	5
Grade							
	Q1	Q2	Q3	Q4	Q5	Q6	Q7
1	1	1	1	1	1	1	1
2	0	0	0	0	0	0	0
3	0	0	1	1	1	1	0
4	3	5	2	2	5	1	2
5	17	15	17	17	14	18	18

Mathematics							
	Q1. Learning value (in terms skills, concepts, knowledge and analytical abilities)	Q2. Applicability/r relevance to real life situation	Q3. Depth of the course content	Q4. Extent of coverage of course	Q5. Extent of effort required by students	Q6. Relevance/learning value of project/report	Q7. Overall rating
	5	4	5	5	5	5	5
	4	4	4	4	4	4	4
	4	3	4	3	5	3	4
	4	4	4	4	4	4	4
	5	5	5	5	5	5	5
	4	4	3	5	4	5	4
	4	4	4	5	4	4	4
	4	4	5	4	5	4	4
	5	3	5	5	5	5	4
	4	4	4	4	4	4	4
	5	4	5	5	5	4	5
	4	3	4	4	4	4	4
	3	3	3	3	3	2	3
	5	4	4	4	4	5	5
	4	3	3	5	3	5	3
	4	3	4	4	3	4	4
	4	4	4	4	4	4	4
	3	4	4	5	4	4	4
	5	5	5	5	5	5	5
	3	4	3	5	4	3	4
	5	4	5	5	4	4	5
	5	5	5	5	5	5	5
	4	3	4	4	4	4	4
	5	5	5	5	5	5	5
	5	3	4	4	4	4	4
	2	3	3	2	2	2	2
	3	3	3	3	3	3	3
	5	4	5	5	5	4	5
	5	5	4	5	4	5	4
	5	5	4	5	5	5	5
	5	5	5	5	4	5	5
	3	1	4	3	4	3	3
	5	5	5	5	5	5	5
	5	3	4	5	5	4	4
	4	5	4	5	4	4	4
	3	5	3	5	4	3	3
	5	5	5	5	5	5	5
	2	2	3	2	5	3	2
Grade							
	Q1	Q2	Q3	Q4	Q5	Q6	Q7
1	0	1	0	0	0	0	0
2	2	1	0	2	1	2	2
3	6	11	8	4	4	6	5
4	13	14	17	10	18	16	18
5	17	11	13	22	15	14	13

	4	3	4	4	4	4	4
	5	5	5	5	5	5	5
	1	1	1	1	1	1	1
	5	5	5	5	5	5	5
	5	5	5	5	5	5	5
	4	4	5	5	5	4	5
	5	5	5	5	5	5	5
	5	5	5	5	4	5	5
	5	4	5	5	5	5	5
	5	5	5	5	5	5	5
	5	5	5	5	5	5	5
	5	4	5	5	5	4	5
	5	5	5	5	5	5	5
	5	5	4	5	5	5	5
	4	5	5	5	4	5	5
	5	5	5	5	5	5	5
	5	5	5	5	5	5	5
	1	1	1	1	3	1	2
	4	5	5	5	4	4	5
	5	5	5	5	5	5	5
	5	5	5	5	5	5	5
	5	5	5	5	5	5	5
	4	5	5	5	4	5	5
	5	5	5	5	5	5	5
	5	5	5	5	5	5	5
	4	4	5	5	4	4	4
	5	5	5	5	5	5	5
	5	4	5	4	5	4	5
	5	5	5	5	5	4	5
	5	5	5	5	5	5	5
	5	4	5	5	5	4	4
	4	3	4	4	4	4	4
	5	5	5	5	5	5	5
	5	5	5	5	5	5	5
	5	4	5	5	5	5	5
	4	5	4	5	5	5	5
	5	5	5	5	5	5	5
	5	4	4	5	4	4	5
	5	5	4	5	5	5	5
	5	5	5	5	5	5	5
	5	5	5	5	4	5	4
	4	4	4	4	4	3	4
	5	5	5	5	5	5	5
	5	5	5	5	5	5	5
	4	5	4	4	5	5	4
	5	5	5	5	5	5	5
	5	5	5	5	5	5	5
	5	5	5	5	5	5	5
	5	5	5	5	4	5	5
	1	1	1	1	1	1	1
	5	5	5	5	5	5	5
	4	4	5	5	5	4	5

	5	4	5	4	5	5	5
	5	4	4	5	5	4	5
	4	5	5	4	4	5	5
	5	5	5	5	5	5	5
	5	5	5	5	5	5	5
	4	4	4	5	5	5	5
	3	3	3	3	3	3	3
	Grade						
	Q1	Q2	Q3	Q4	Q5	Q6	Q7
1	3	3	3	3	2	3	2
2	0	0	0	0	0	0	1
3	1	5	1	1	2	2	1
4	16	14	14	8	15	13	9
5	50	48	52	58	51	52	57

Physics							
	Q1. Learning value (in terms skills, concepts, knowledge and analytical abilities)	Q2. Applicability/relevance to real life situation	Q3. Depth of the course content	Q4. Extent of coverage of course	Q5. Extent of effort required by students	Q6. Relevance/learning value of project/report	Q7. Overall rating
	3	2	4	4	4	2	3
	4	4	4	4	4	4	4
	4	3	5	3	3	4	4
	1	1	3	2	5	1	1
	5	3	4	4	4	5	4
	1	1	1	4	3	2	3
	4	4	5	4	4	4	4
	5	5	5	5	5	5	5
	4	4	5	3	5	4	4
	5	4	5	5	5	5	5
	3	3	4	4	4	3	3
	4	4	4	4	4	4	4
	3	2	4	4	2	4	3
	4	4	4	4	4	4	4
	5	5	5	4	5	5	5
	2	1	3	3	3	3	3
	4	4	4	3	3	4	4
	3	3	5	3	4	3	3
	4	4	4	4	4	4	4
	3	3	3	3	3	3	3
	2	3	4	3	5	4	3
	2	3	4	3	4	4	3
	4	4	3	3	4	3	3
	5	5	5	5	3	5	5
	3	3	4	4	5	3	3
	3	3	4	1	4	2	3

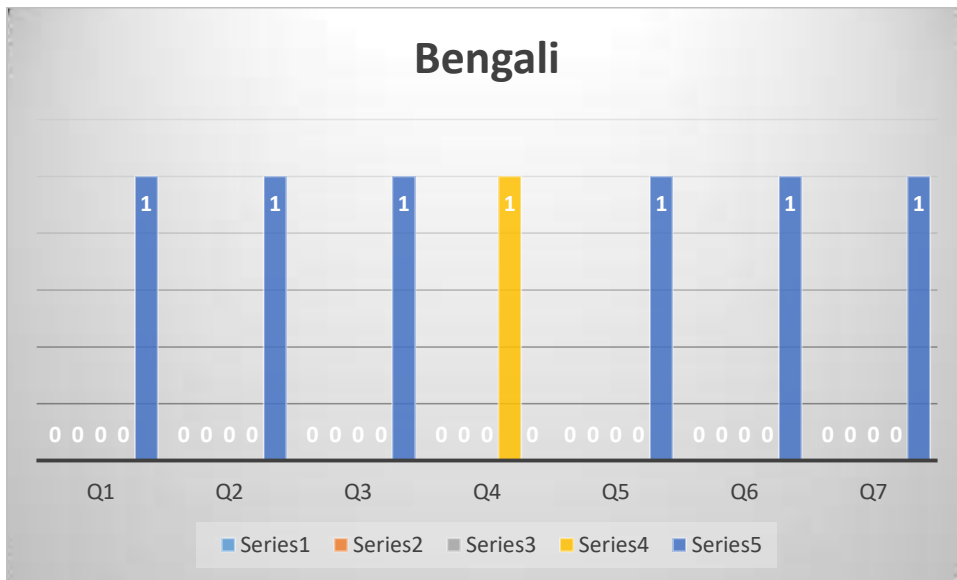
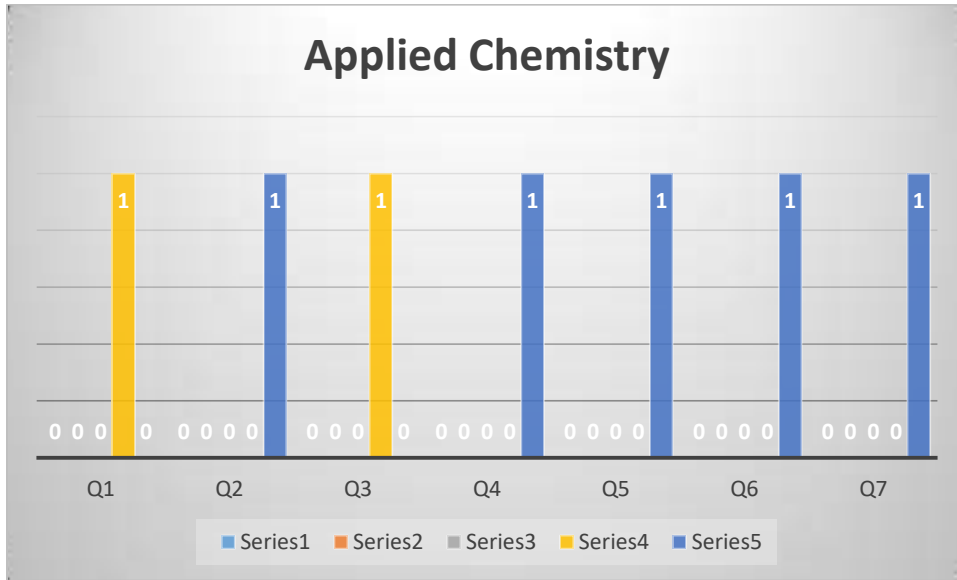
	3	4	3	4	5	2	4
	5	4	5	4	4	4	4
	3	3	3	4	3	4	3
Grade							
	Q1	Q2	Q3	Q4	Q5	Q6	Q7
1	2	3	1	1	0	1	1
2	3	2	0	1	1	4	0
3	9	10	6	9	7	6	13
4	9	11	13	15	13	13	11
5	6	3	9	3	8	5	4

Political Science							
	Q1. Learning value (in terms skills, concepts, knowledge and analytical abilities)	Q2. Applicability/relevance to real life situation	Q3. Depth of the course content	Q4. Extent of coverage of course	Q5. Extent of effort required by students	Q6. Relevance/learning value of project/report	Q7. Overall rating
	5	5	5	5	5	5	5
	5	5	5	5	5	5	5
Grade							
	Q1	Q2	Q3	Q4	Q5	Q6	Q7
1	0	0	0	0	0	0	0
2	0	0	0	0	0	0	0
3	0	0	0	0	0	0	0
4	0	0	0	0	0	0	0
5	2	2	2	2	2	2	2

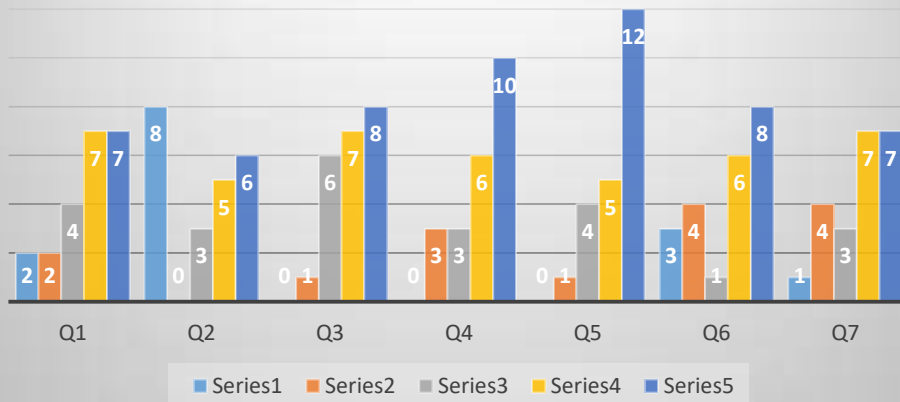
Sanskrit							
	Q1. Learning value (in terms skills, concepts, knowledge and analytical abilities)	Q2. Applicability/relevance to real life situation	Q3. Depth of the course content	Q4. Extent of coverage of course	Q5. Extent of effort required by students	Q6. Relevance/learning value of project/report	Q7. Overall rating
	4	4	4	4	4	4	4
	5	5	4	4	4	4	4
	4	4	4	4	4	4	4
	4	5	4	5	5	5	5
	4	3	3	3	4	4	4
	5	5	5	5	5	5	5
	4	4	4	4	4	5	4
	4	4	4	4	4	5	4
	4	4	4	4	4	4	4
	4	4	4	4	4	4	4
	3	3	2	4	4	3	3
	4	4	4	4	4	4	4

	4	4	4	4	4	4	4
	5	5	5	5	5	5	5
	1	1	1	1	1	1	1
	5	5	5	5	5	5	5
	5	5	5	5	5	5	5
	5	5	5	5	5	5	5
	4	4	4	4	4	4	4
	4	5	4	4	4	5	5
	5	4	5	5	5	5	5
	3	4	5	3	4	5	5
	4	4	4	4	4	4	4
	4	4	4	4	4	4	4
	5	5	5	5	5	5	5
	5	5	5	5	5	5	5
	4	4	4	4	4	5	5
	5	5	5	5	5	5	5
	5	5	5	5	5	5	5
	5	5	5	5	5	5	5
	5	5	5	5	5	5	5
	5	5	5	5	5	5	5
	5	5	5	5	5	5	5
	5	5	5	5	5	5	5
	5	5	5	5	5	5	5
	4	4	4	4	5	5	4
	4	4	4	4	4	4	4
	5	5	5	5	5	5	5
	5	5	5	5	4	5	5
	5	5	5	5	5	5	5
	5	5	5	5	5	5	5
	5	5	5	5	5	5	5
	5	3	5	5	4	5	5
	5	5	5	5	5	5	5
	5	5	4	4	4	5	5
	4	5	5	3	3	4	4
	5	5	5	5	5	5	5
	5	5	5	5	5	5	5
	5	5	4	5	5	5	4
	4	4	4	4	4	4	4
	5	5	5	5	5	5	5
	5	5	5	5	5	5	5
	Grade						
	Q1	Q2	Q3	Q4	Q5	Q6	Q7
1	1	1	1	1	1	1	1
2	0	0	1	0	0	0	0
3	2	3	1	3	1	1	1
4	18	16	19	18	21	13	17
5	26	27	25	25	24	32	28

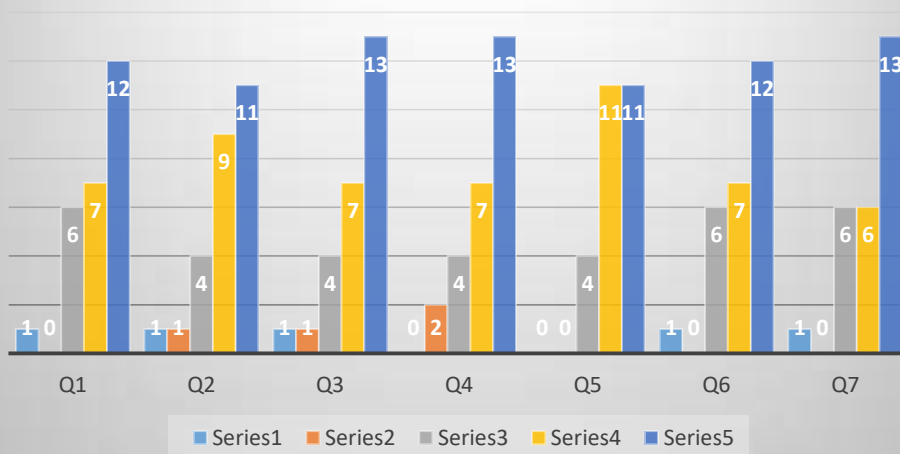
Graphics (Chart)



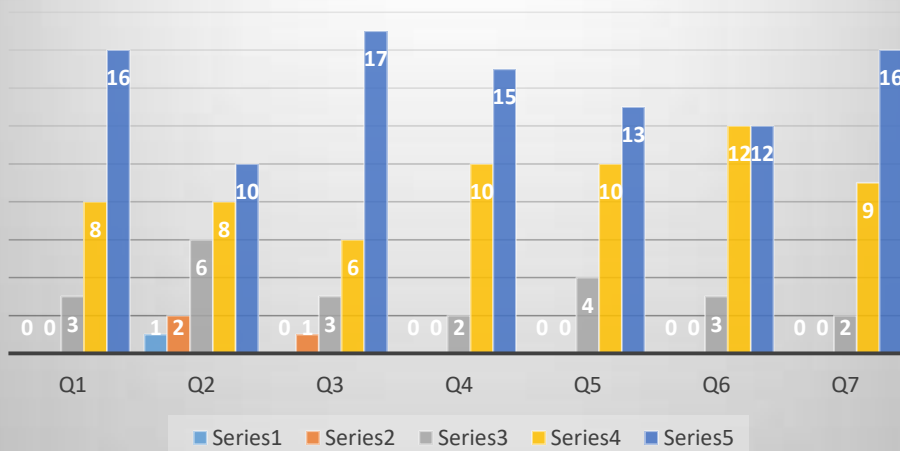
Chemistry

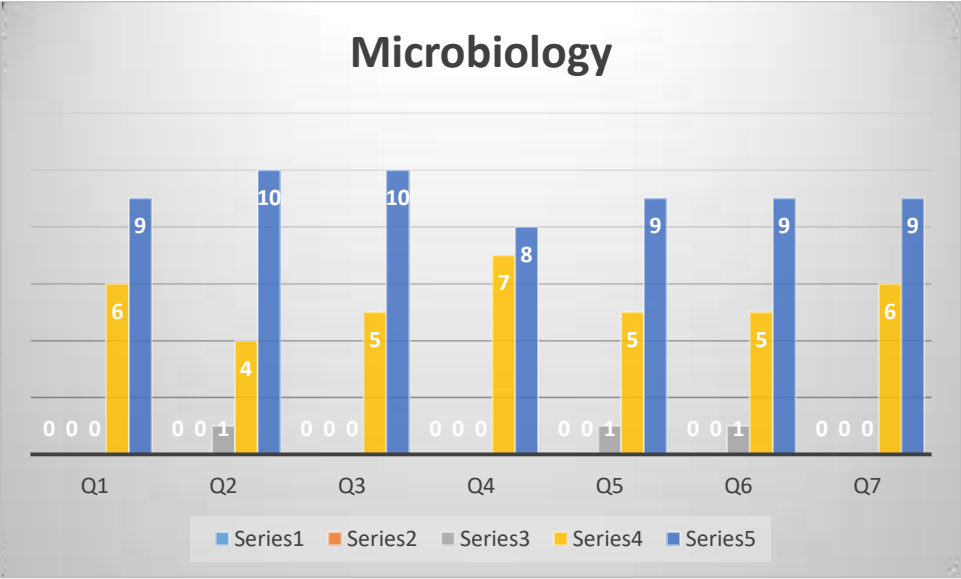
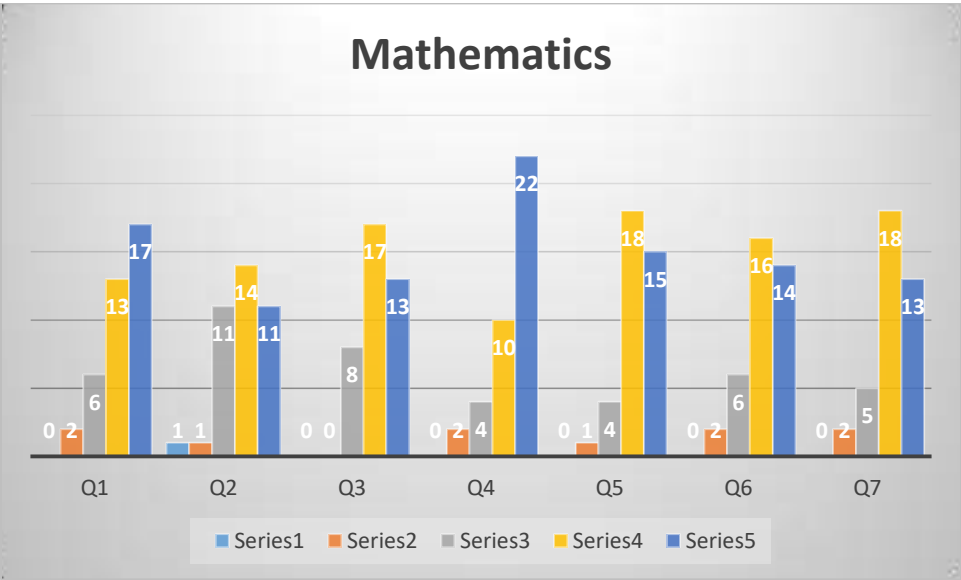
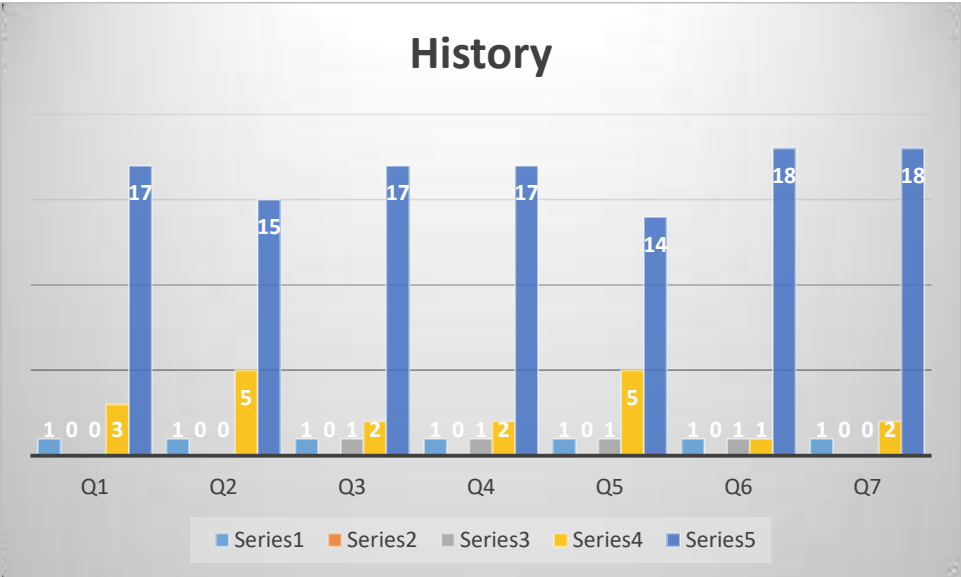


Computer Science

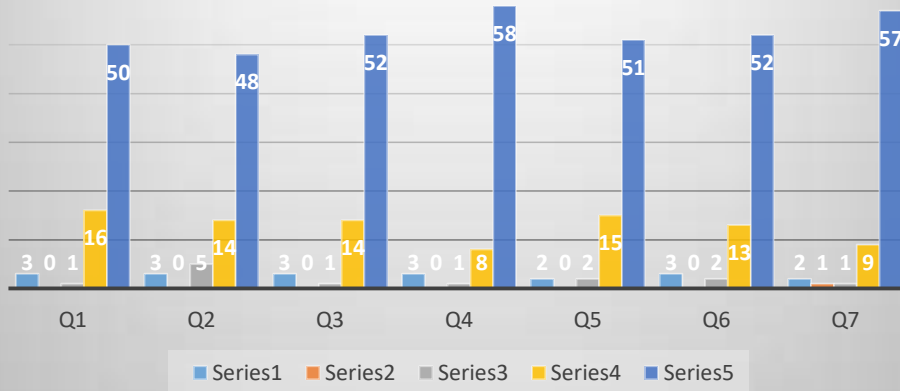


English

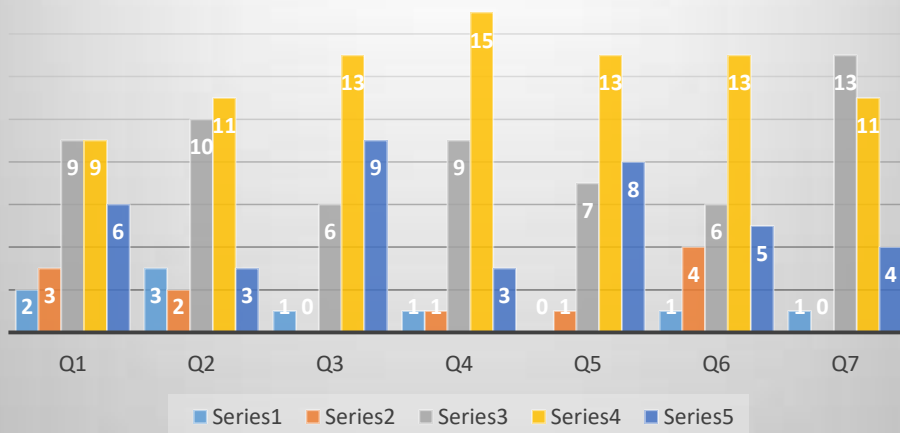




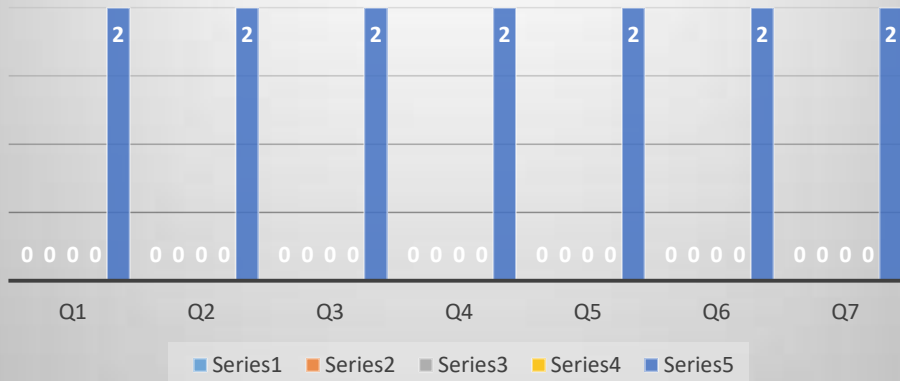
Philosophy



Physics



Political Science



Sanskrit

